



MIRA 40

Battery Powered Multifunctional
Auto Floor Scrubber Dryer

FREE
EXTRA BATTERY



NOW
COMES WITH
2
BATTERIES

UP TO 8 HOURS
SCRUB TIME

Model:

THE MIRA 40 OFFERS COVERAGE
OF UP TO **3,250 SQM**, WHICH IS MORE
THAN DOUBLE IT'S CLOSEST COMPETITOR*

INCLEAN
INNOVATION AWARDS
WINNER **2019**



*Based on standard MIRA 40 with 2 batteries on LOW-SPEED MODE

CONTACT CLEANSTAR FOR YOUR NEAREST STOCKIST

FEATURES:

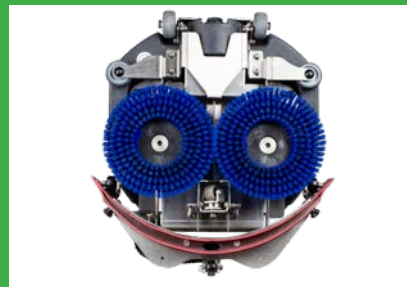
- **2 x 36V lithium batteries (13AH)**
- One battery required for operation
- **BONUS** battery included to increase working time
- Battery charger included
- Up to **1500** recharge cycles each
- **410mm** working width
- Up to **90 mins. working time** per battery at max. function
- Up to **4 hour run time** per battery when polishing on low speed
- Up to 4 hours **recharge** time
- **3-speed brush:** 145-175-220rpm
- **3L** clear water tank
- **5L** dirty water recovery tank
- **Float system** in recovery tank (with auto cut-off)
- Heavy duty **stainless steel** frame
- **36V** two-stage **8-speed** vacuum suction motor
- **Single** multi-function digital control panel
- **Usage Timer/Counter**
- Eco **energy saving** function
- Battery level **indicator**
- **Reversible** squeegee blades (4 edges)
- **Water consumption** 3 Litres
15 mins **@ MAX 100%**
30 mins **@ 50% Eco mode**
- Uses water or low foam detergent
- **SUITABLE FOR HARD FLOOR SURFACES**
- **Quick Reference User Guide** included in box

NEW FEATURES:

- Now comes with auto shut off float system, when recovery tank is full
- Improved handle support
- Improved squeegee locking system
- New adjustable rear squeegee wheel
- Long lasting aluminium drive bush
- Recovery tank sealing gasket upgraded to silicone
- Improved wiring in motor



FLOOR SQUEEGEE CAN BE RAISED WHEN NOT IN USE



**MEDIUM BLUE BRUSHES
30KG BRUSH PRESSURE**



**RANGE OF BRUSHES &
PADS AVAILABLE**



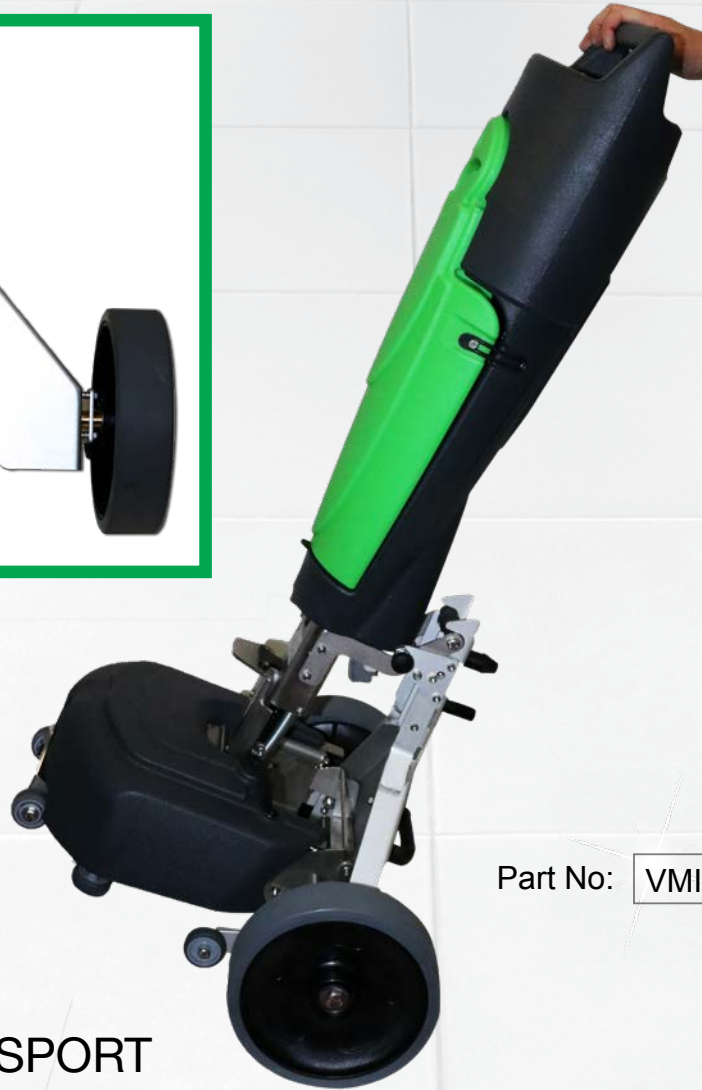
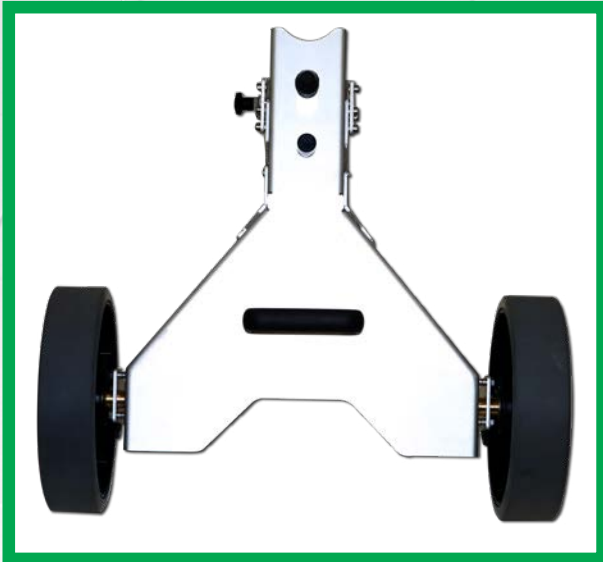
**360 CONTROLLED
INCLINATION
STABLE IN VERTICAL
POSITION**



RELIABLE NATIONWIDE SERVICE NETWORK & PARTS BACKUP

MIRA 40

TROLLEY FOR MIRA 40



Part No: **VMIRA-TROLLEY**



EASY TO TRANSPORT



CONTACT CLEANSTAR FOR YOUR NEAREST STOCKIST

MIRA 40

BATTERY POWERED SCRUBBER DRYER

SPARE PARTS & ACCESSORIES



VMIRA-KIT0054
Lithium Battery Kit - 36v



VMIRA-ELE0011
Battery Plug



VMIRA-CRBO012
Battery Charger



VMIRA-TUB0018
Water Hose



VMIRA-KIT0055
SQUEEGEE BLADES
Front & Rear **POLYURETHANE**



VMIRA-KIT0056
SQUEEGEE BLADES
Front & Rear **LYNATEX**



VMIRA-SPA0026
PPL Standard BLUE Brush
1pc - for general cleaning



VMIRA-PAD0012
Red Pad 1pc
Spray Shining



VMIRA-PAD0010
White Pad 1pc
Finishing and Polishing



VMIRA-PAD0011
Beige Pad 1pc
Polishing



VMIRA-SPA0026.P
Soft Brown Brush
1pc - great for treated
surfaces, wood &
polishing



VMIRA-PAD0015
Brown Pad 1pc
Agressive Clean



VMIRA-PAD0013
Blue Pad 1pc
Light Cleaning



VMIRA-PAD0014
Green Pad 1pc
Intermediate
Cleaning



VMIRA-SER0020.F
Clean Water Tank



VMIRA-SER0022.B
Recovery Tank



VMIRA-KIT0064
Vac Motor - 36v
2 Stage



VMIRA-SPA0026.TX
Hard Grey Tynex Brush
1pc - for heavy duty
cleaning



VMIRA-BOC0101
Spacer Pivot Bush
Small Back Wheel



VMIRA-MIN0021
Shaft Key



VMIRA-SPA0026.T
Brush Pad Drive/Holder
1pc - use with pads



VMIRA-DAD0023
Ring Nut for
Small Back Wheel



VMIRA-ROT0029
Front Wheel
D=50



VMIRA-ROT0030
Small Wheel
D=30

* Refer to full parts breakdown & instruction manual.

MIRA 40

BATTERY POWERED SCRUBBER DRYER

SPARE PARTS & ACCESSORIES



VMIRA-TUB0022
Vac Hose
Recovery tank hose



VMIRA-TUB0023
Vacuum Suction
Hose



VMIRA-ASS0134
Recovery Tank Cap



VMIRA-CAB0037
Engine Wiring



VMIRA-ASS0135
Clean Water Cap



VMIRA-CAB0035
Main Wiring



VMIRA-COM0065
Elasting Rubber
Couping



VMIRA-COM0067
Knob SQG M6 1pc



VMIRA-COM0069
Knob MOD 1065/F M6 1pc



VMIRA-COM0070
Magnet 1pc



VMIRA-COM0072
Hose Cap 1pc



VMIRA-COM0076
3L Water Fit Bottle



VMIRA-COS0083
Solution Cap Key



VMIRA-ELE0184
Solenoid Valve Compl



VMIRA-FILO017
Clear Water Filter

May
come
in **Blue**
or **Red**



VMIRA-FILO018
Vacc Filter



VMIRA-GRP0120/R
Membrane Control



VMIRA-GUA0019
Gasket Kit



VMIRA-INN0018
Brush Coupling
O-Ring



VMIRA-KIT0057-X
Squeegee Body



VMIRA-KIT0059-X
Handle Support



VMIRA-KIT0060
Tube with Curved



VMIRA-KIT0063
Kit Transport
Wheel 1pc



VMIRA-MIN0017
O-Ring

SCREWS ALSO AVAILABLE

* Refer to full parts breakdown & instruction manual.

MIRA 40

BATTERY POWERED SCRUBBER DRYER

SPARE PARTS & ACCESSORIES



VMIRA-MIN0018
O-Ring



VMIRA-MOT0032
Right Brush Motor



VMIRA-MOT0033
Left Brush Motor



VMIRA-RAC0045
"T" Raccord



VMIRA-PIA0172-X
Squeegee Front Metal Blade



VMIRA-PIA0175-X
Rear Spring Blade Squeegee



VMIRA-RAC0044
Nipples M-M 1/4



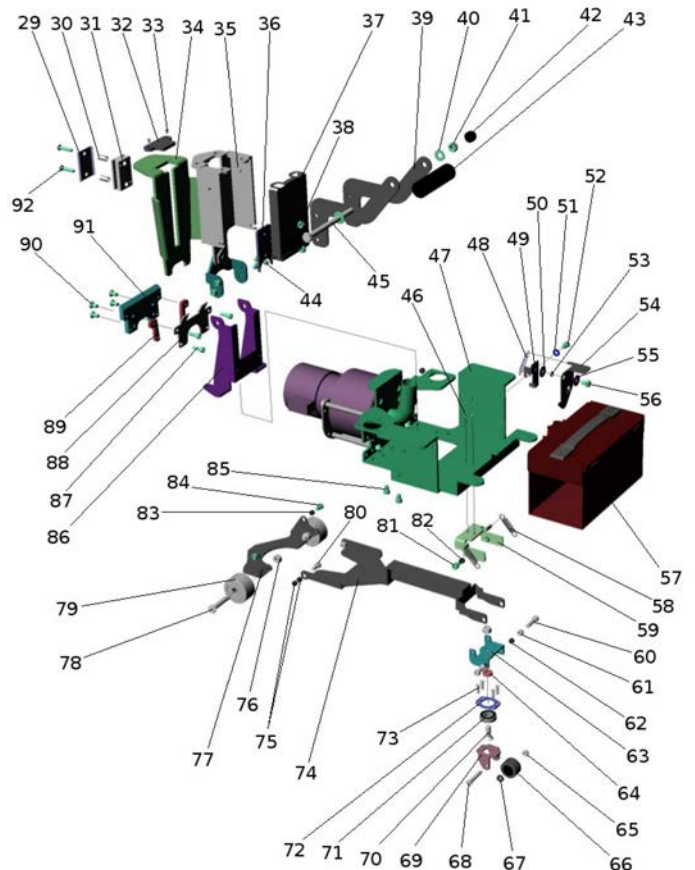
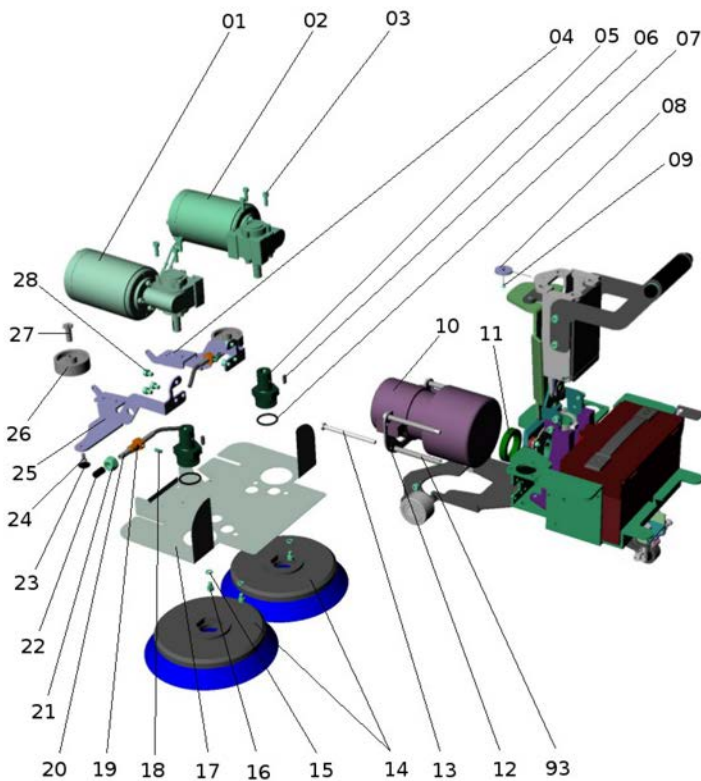
VMIRA-ROT0016
Adjusting Wheel Ssq 1pc



VMIRA-TROLLEY
Transport Trolley



PARTS BREAKDOWN

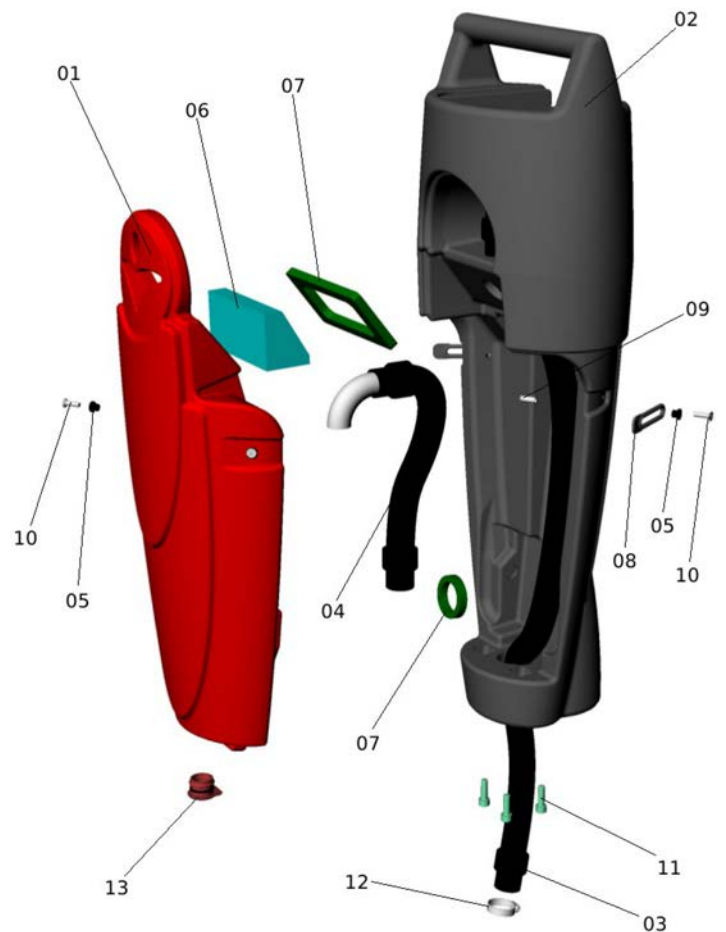
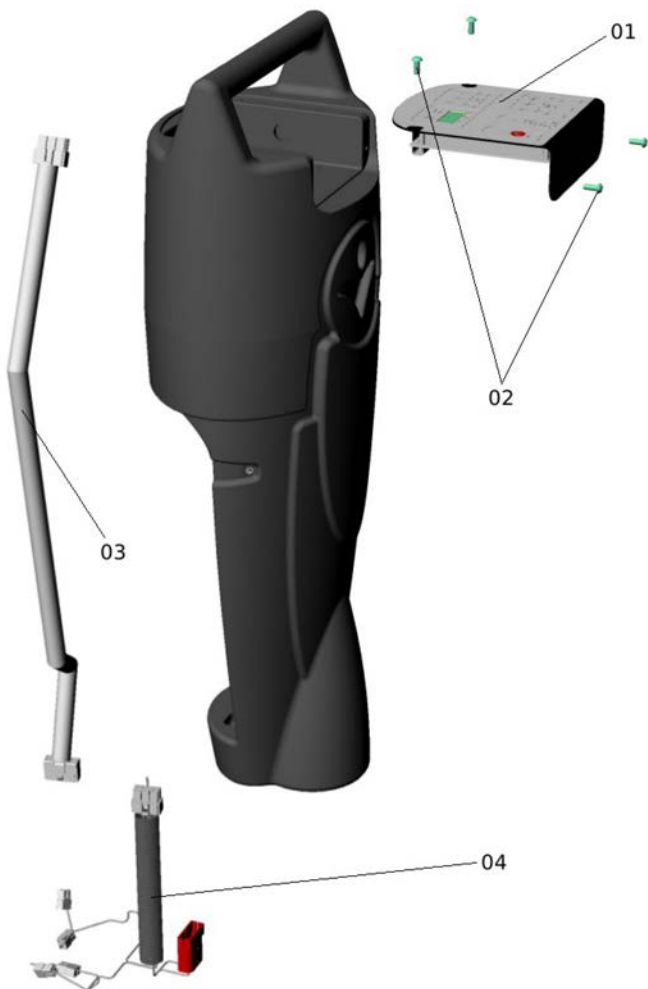
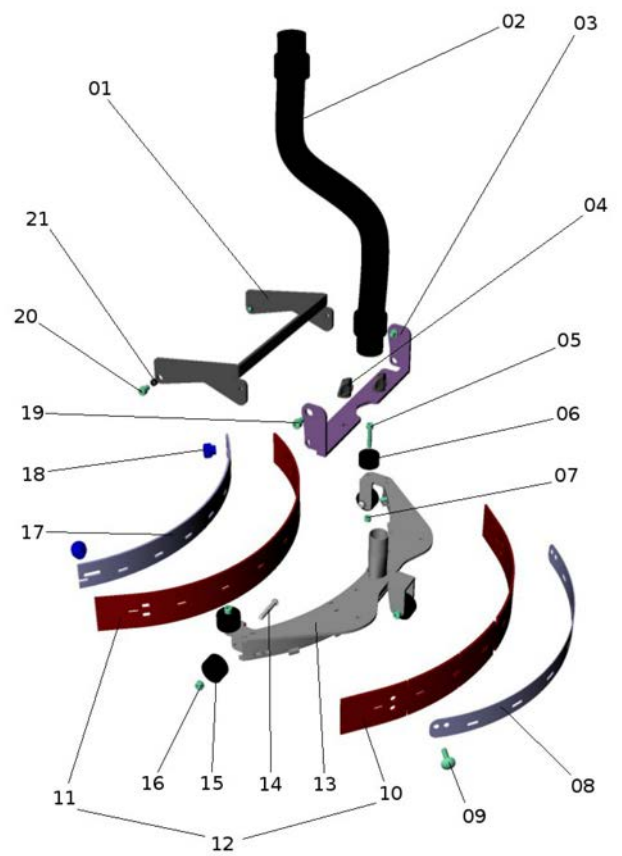
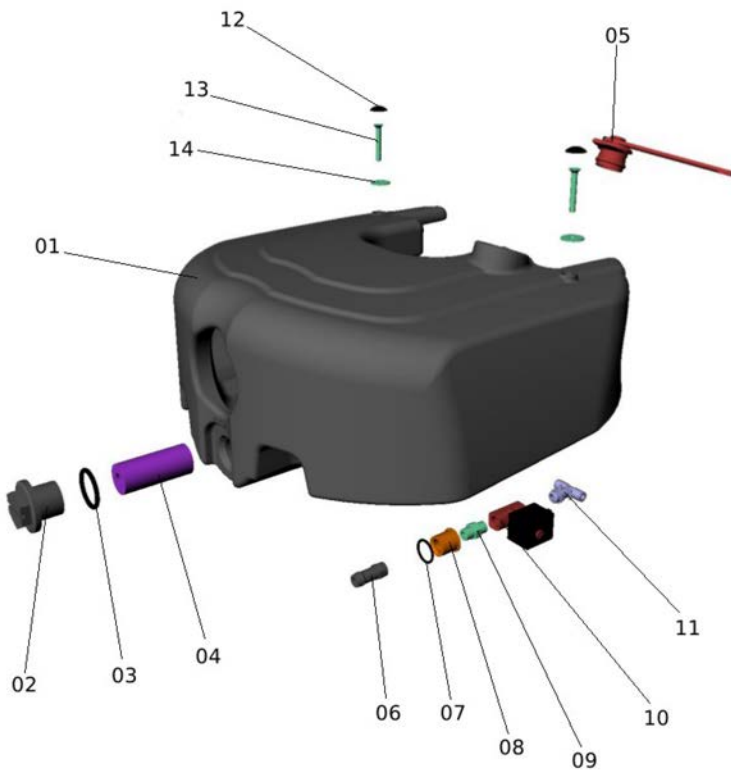


* Refer to full parts breakdown & instruction manual.

MIRA 40

BATTERY POWERED SCRUBBER DRYER

PARTS BREAKDOWN CONT'D



* Refer to full parts breakdown & instruction manual.



1. PLACE THE TWO BRUSHES ONTO BRUSH DRIVE (SIMPLY PUSH ON)



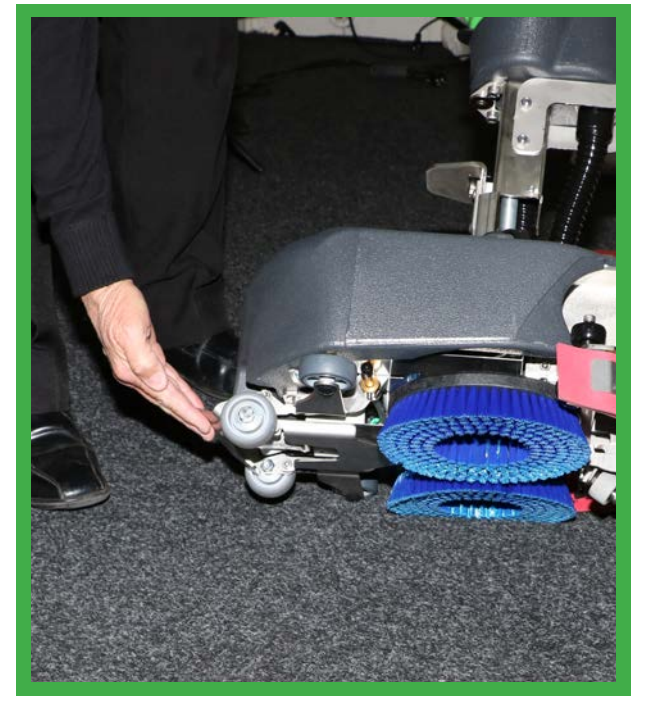
2. FIT SQUEEGEE ASSEMBLY WITH TWO WINGNUTS SUPPLIED



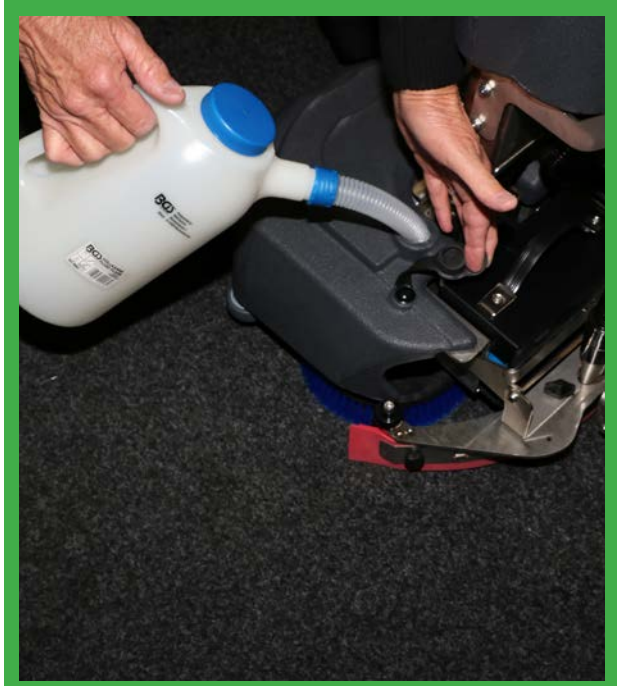
3. FIT SUCTION HOSE (FIRMLY) FROM BASE TO BODY OF MACHINE



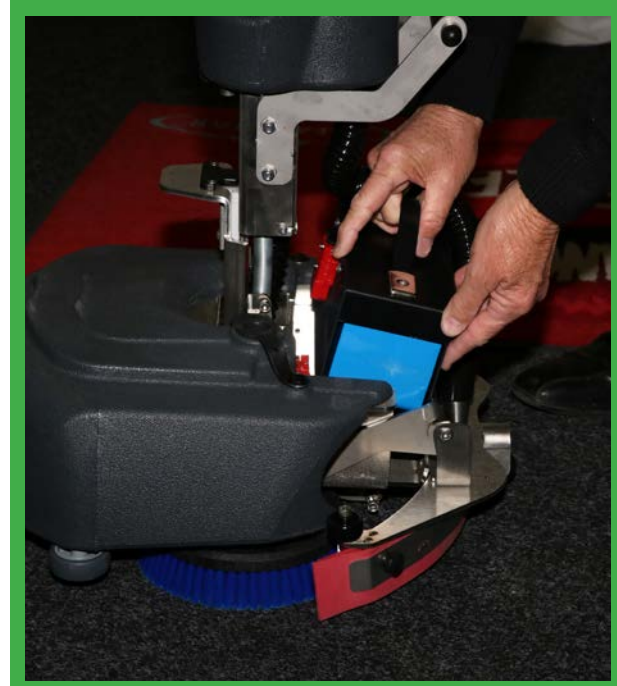
4. STAND MACHINE UP IN VERTICAL POSITION



5. TILT MACHINE TO SIDE (OPPOSITE TO SOLUTION INLET) AND RAISE TROLLEY WHEELS



6. REMOVE INLET PLUG AND FILL SOLUTION TANK WITH CAN SUPPLIED



7. PLACE BATTERY INTO MACHINE



8. PRESS DOWN 'PUSH' TO LOWER SQUEEGEE ASSEMBLY



9. RAISE LOCKING SLIDE BEFORE TURNING MACHINE ON



10. MACHINE IS READY FOR USE



11. STAND BEHIND CONTROL PANEL



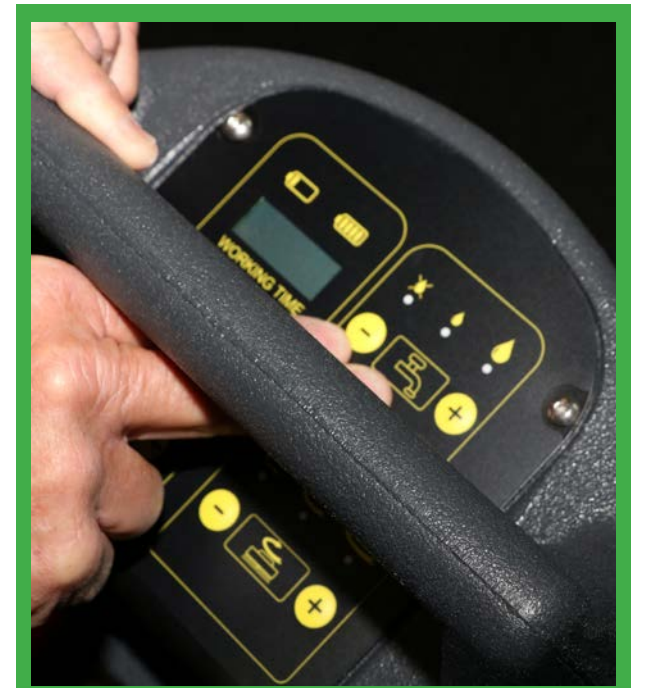
12. TO BEGIN SCRUBBING PROCESS, TURN POWER BUTTON ON



13. TURN VACUUM/SUCTION BUTTON ON



14. SELECT BRUSH SPEED CONTROL, 1, 2 OR 3



15. SELECT WATER FLOW 1, 2 OR 3



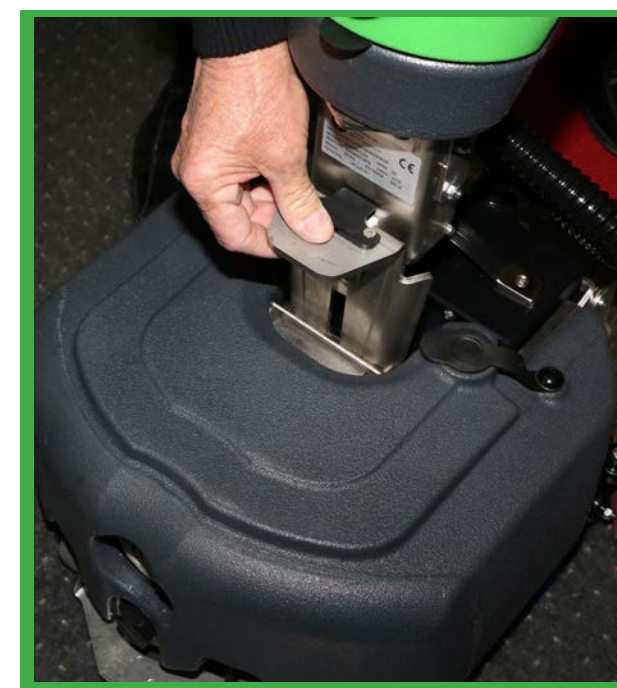
16. MAKE SURE MACHINE IS ALWAYS MOVING FORWARD, SQUEEGEE NEEDS TO FOLLOW BRUSH



17. IF YOU WANT TO BRING MACHINE BACK TO YOU, ROTATE HANDLE AND PULL TOWARD YOU.



18. WHEN JOB IS COMPLETE, PRESS RED OFF BUTTON

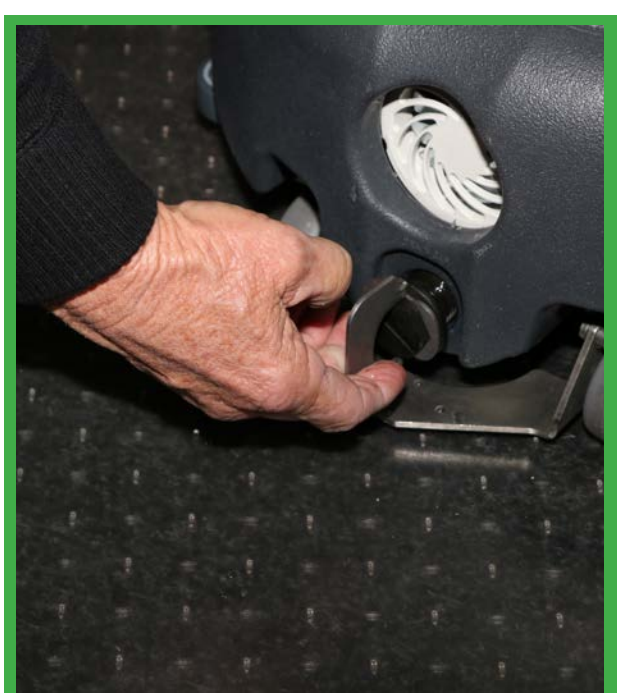


19. LIFT HANDLE TO UPRIGHT POSITION AND SECURE BY LOWERING THE LOCKING SLIDE

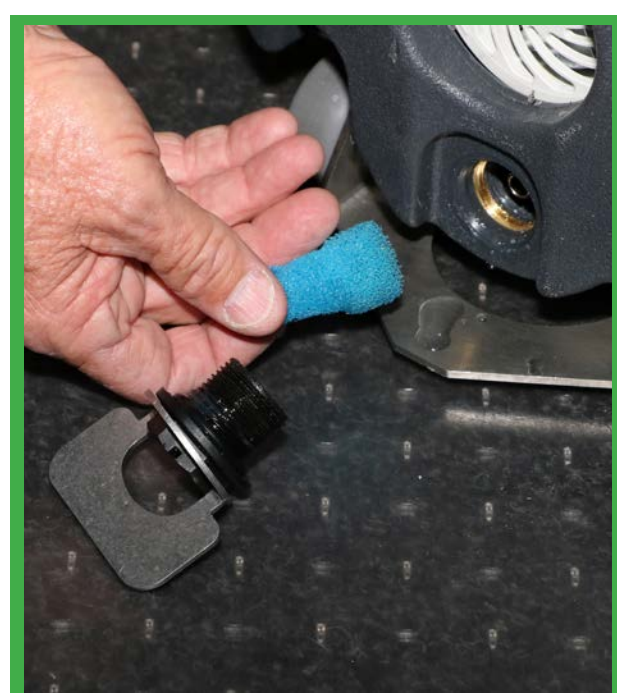


20. 'PULL UP' TO LIFT THE SQUEEGEE ASSEMBLY

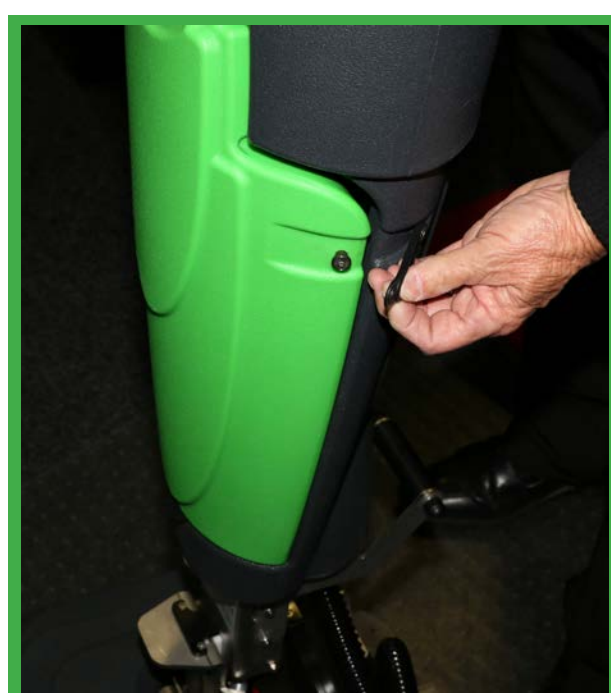
GENERAL MAINTENANCE - AFTER EVERY USE



1. EMPTY THE SOLUTION TANK BY USING SPANNER SUPPLIED. TURN ANTI CLOCKWISE TO UNSCREW, REMOVING PLUG AND FILTER



2. CLEAN THE FILTER AND REPLACE BACK INTO THE MACHINE FOLLOWED BY THE PLUG



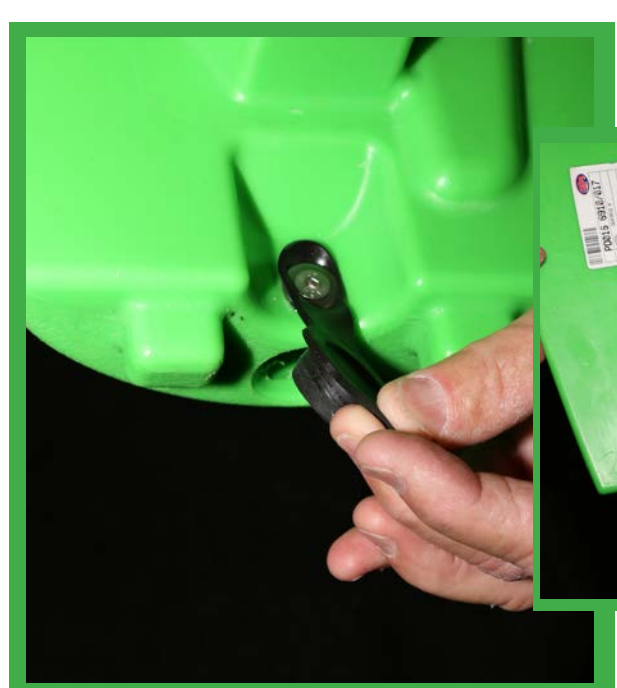
3. EMPTY THE WASTE RECOVERY TANK BY RELEASING CLIPS ON EACH SIDE



4. TILT AND LIFT TANK ASSEMBLY OUT



5. REMOVE TOP FILTER, WASH & REPLACE



6. REMOVE DRAIN PLUG TO SAFELY RELEASE WASTE & RINSE TANK (WIPE AWAY ANY EXCESS GRIME)



7. CLEAN EXCESS GRIME IN HANDLE BODY, BEFORE REPLACING WASTE TANK (we recommend Cleanstar Microfibre Cloth)



8. OK TO STORE VERTICALLY



9. WHEN RED INDICATOR LEVEL ON BRUSH IS REACHED, IT NEEDS REPLACING

10. RECHARGE BATTERY AS PER INSTRUCTION MANUAL (REMOVE BATTERY TO RECHARGE)

11. CONTROL LIGHTS WILL FLASH WHEN RECOVERY TANK IS FULL & NEEDS TO BE EMPTIED